

WING PLATES/SKINS - REMOVAL/INSTALLATION

1. General

- A. The wing spars, ribs, and stringers are covered with formed alloy aluminum sheet skins. Upper and lower skins, between front and rear spars from Wing Stations 55.00 to 214.30, form an integral fuel bay. To minimize fuel tank sealing in this area, spanwise, stringers are bonded to upper and lower skins. All rivets on leading edge from upper front spar cap to lower front spar cap are flush while all other rivets aft of front spar are universal head. Access holes and cover plates are provided in lower skin panels, lower leading edge, and lower trailing edge to provide access to various system components. Access holes and covers are typical for left and right wings.

2. Wing Plates/Skins Removal/Installation

- A. Remove Plates and Covers.

- (1) Index-mark plate or cover to attaching skin or structure and identify plate location to ensure that plate or cover can be installed in same position and location as removed.
- (2) Remove attaching screws and remove plate or cover.

NOTE: Remove sealed plates under fuel cell carefully to avoid damaging skins.

- B. Install Plates and Covers.

- (1) Select and verify correct cover plate for applicable opening.
- (2) Put the cover plate in its position.

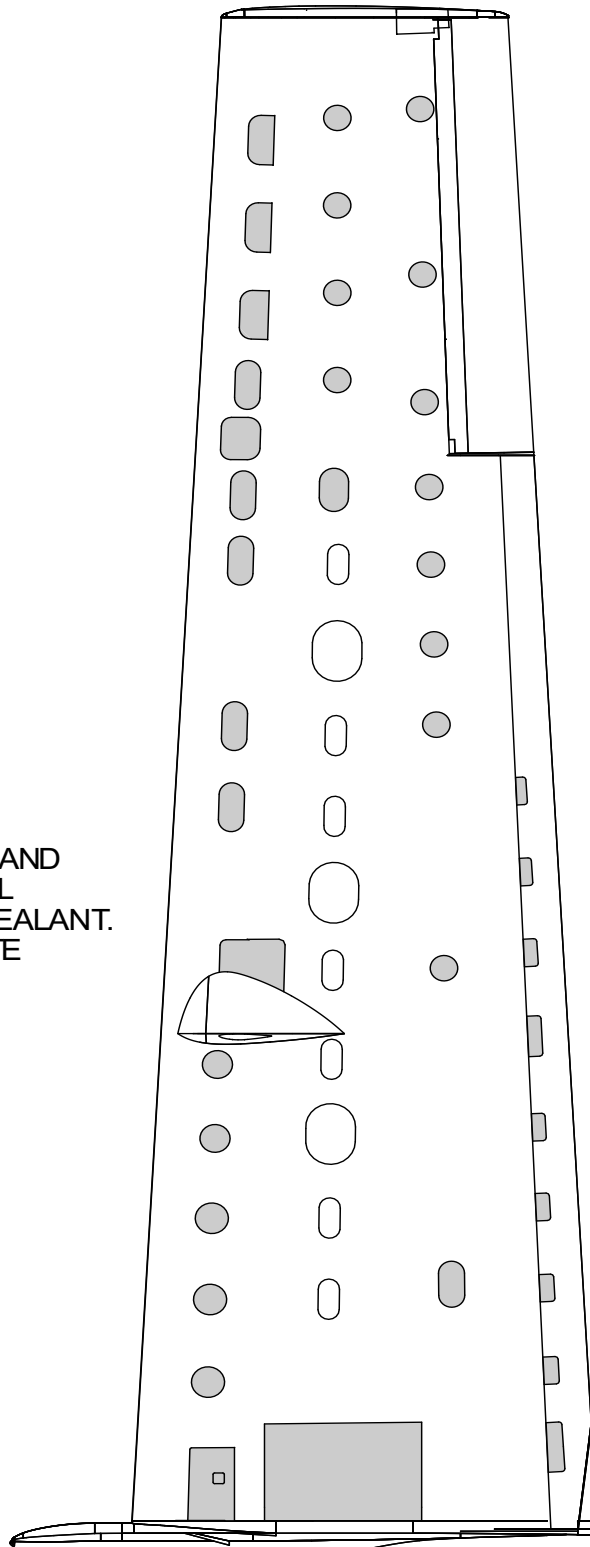
NOTE: On TKS equipped Caravans, apply release agent and seal removable panels with Type I, Class B sealant. Refer to Chapter 20, Fuel, Weather and High-Temperature Sealing - Maintenance Practices. Refer to Figure 401 for panel locations. .

- (3) Install screws and torque to 20 to 25 inch-pounds.
- (4) Seal the fuel bay cover plates. Refer to Chapter 28, Fuel Tank Sealing - Maintenance Practices.

Figure 401 : Sheet 1 : Airplanes Equipped with TKS

A98613

NOTE: APPLY RELEASE AGENT AND SEAL REMOVABLE PANEL WITH TYPE I, CLASS B SEALANT. SHADED AREAS INDICATE PANELS TO BE SEALED.

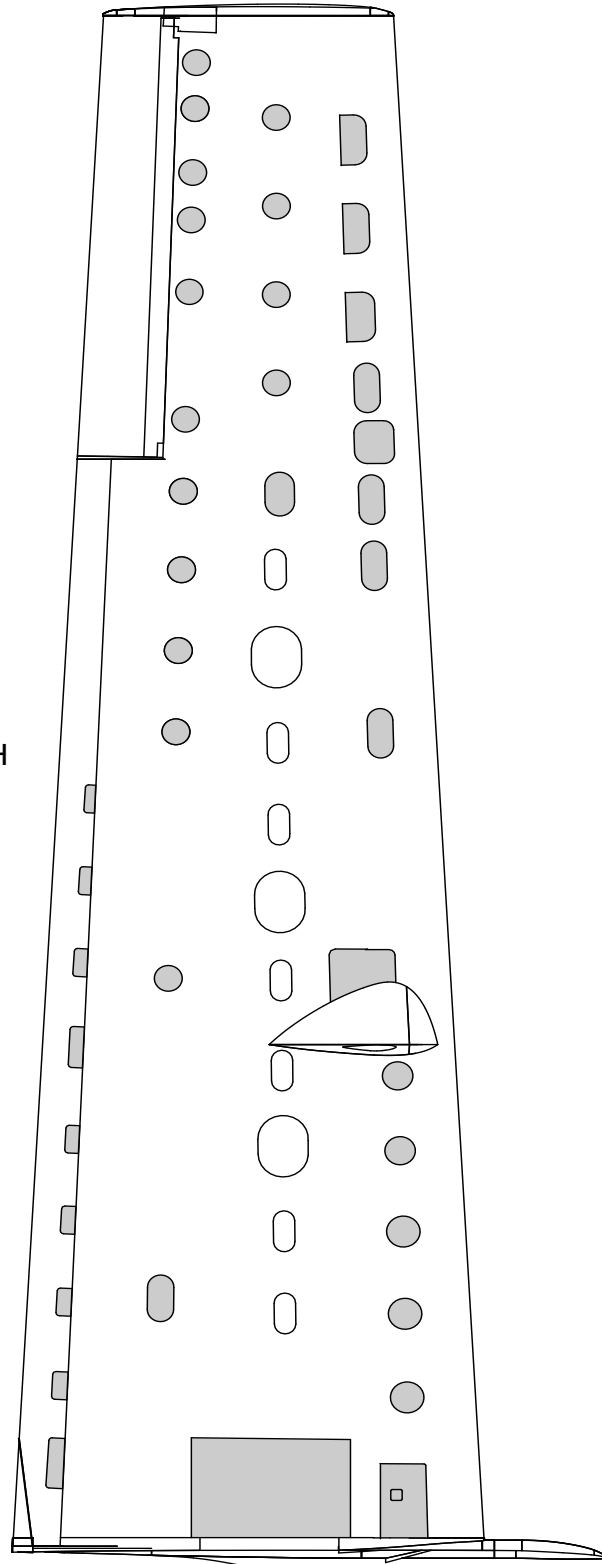


VIEW LOOKING UP AT LEFT WING

Figure 401 : Sheet 2 : Airplanes Equipped with TKS

A98612

NOTE: APPLY RELEASE AGENT AND SEAL REMOVABLE PANEL WITH TYPE I, CLASS B SEALANT. SHADED AREAS INDICATE PANELS TO BE SEALED.



VIEW LOOKING UP AT RIGHT WING